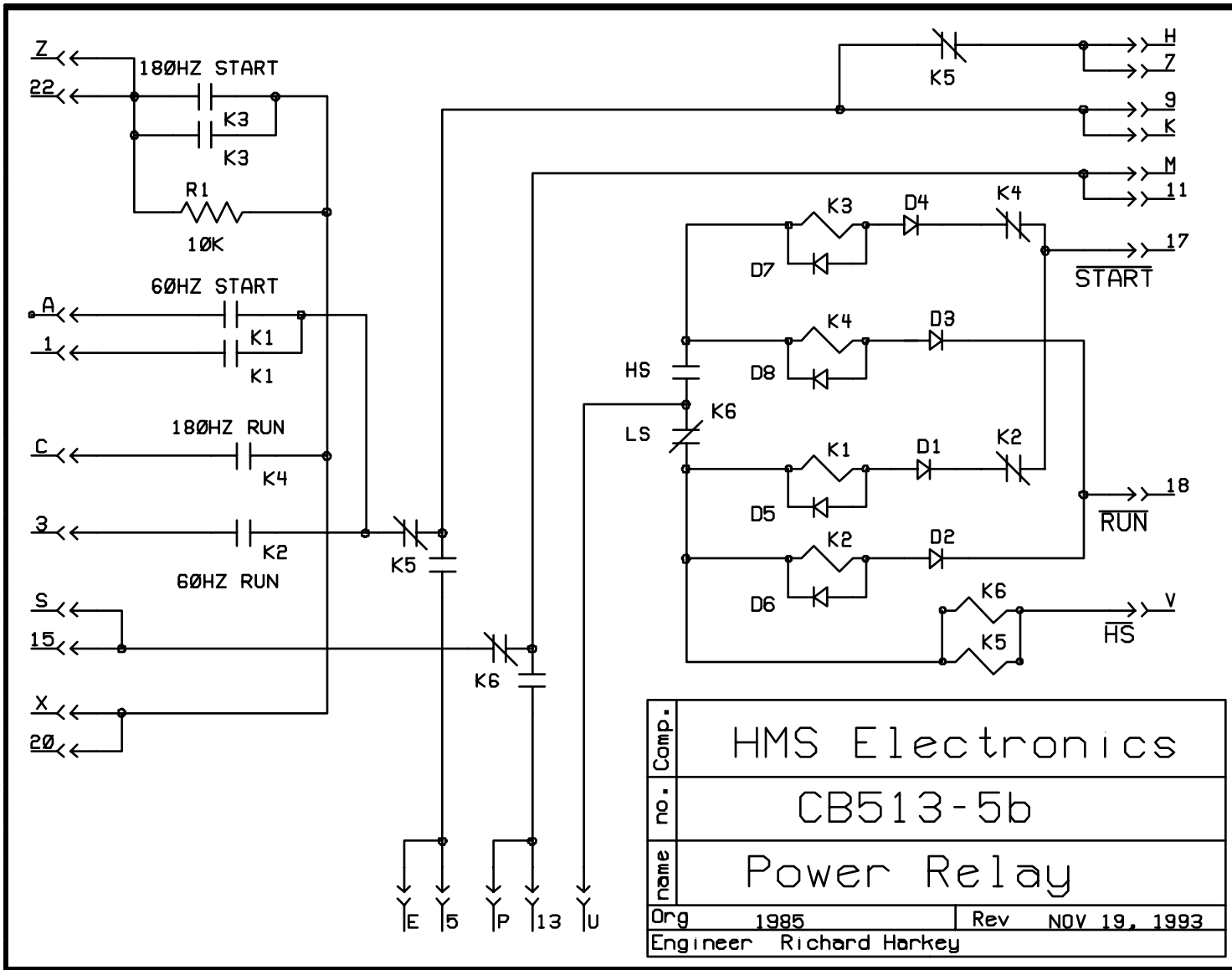
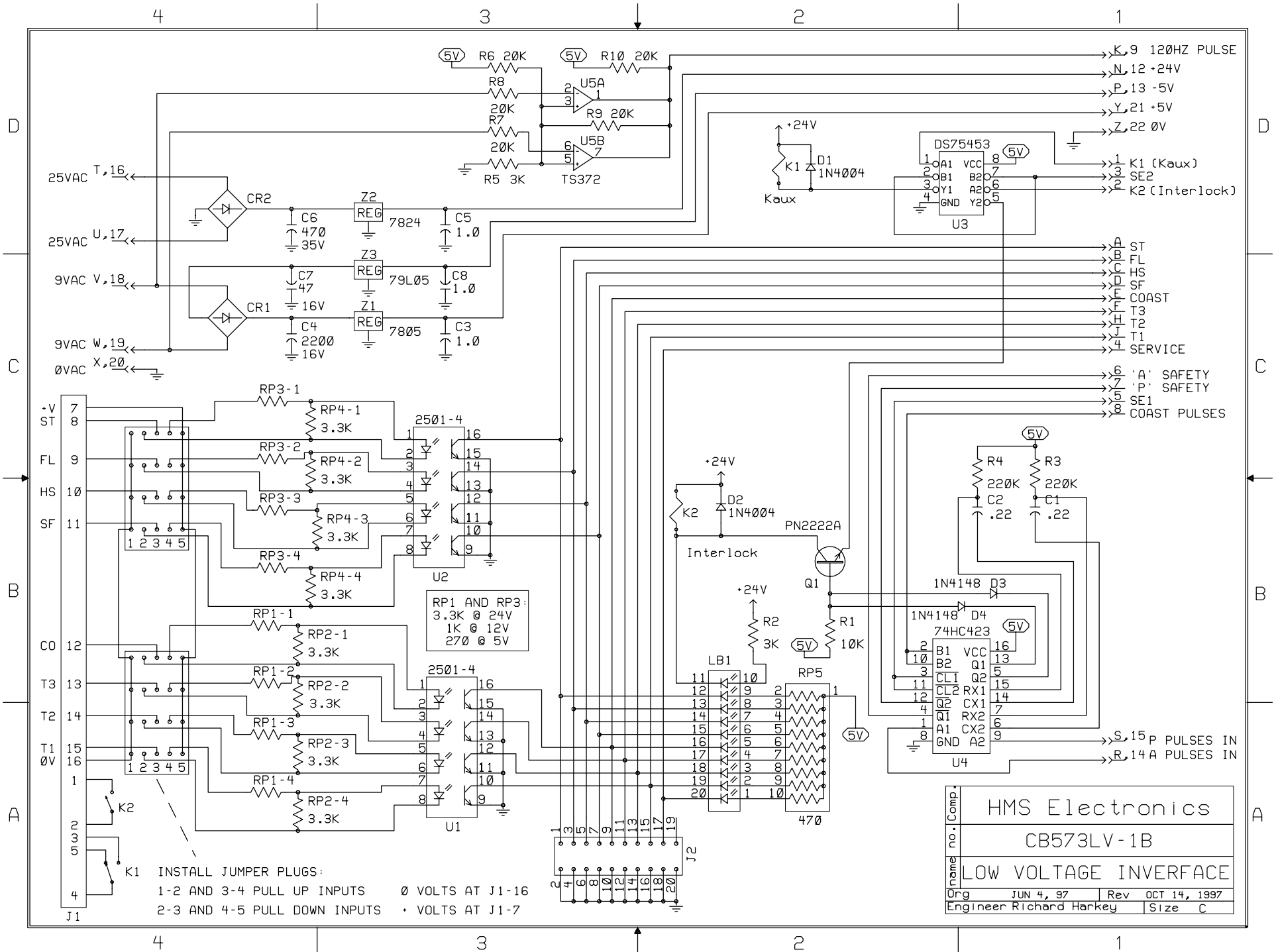


Comp.	HMS Electronics	
no.	CB570	
name	INVERTER BOARD	
Org	10/15/96	Rev
Engineer	Richard Harkey	

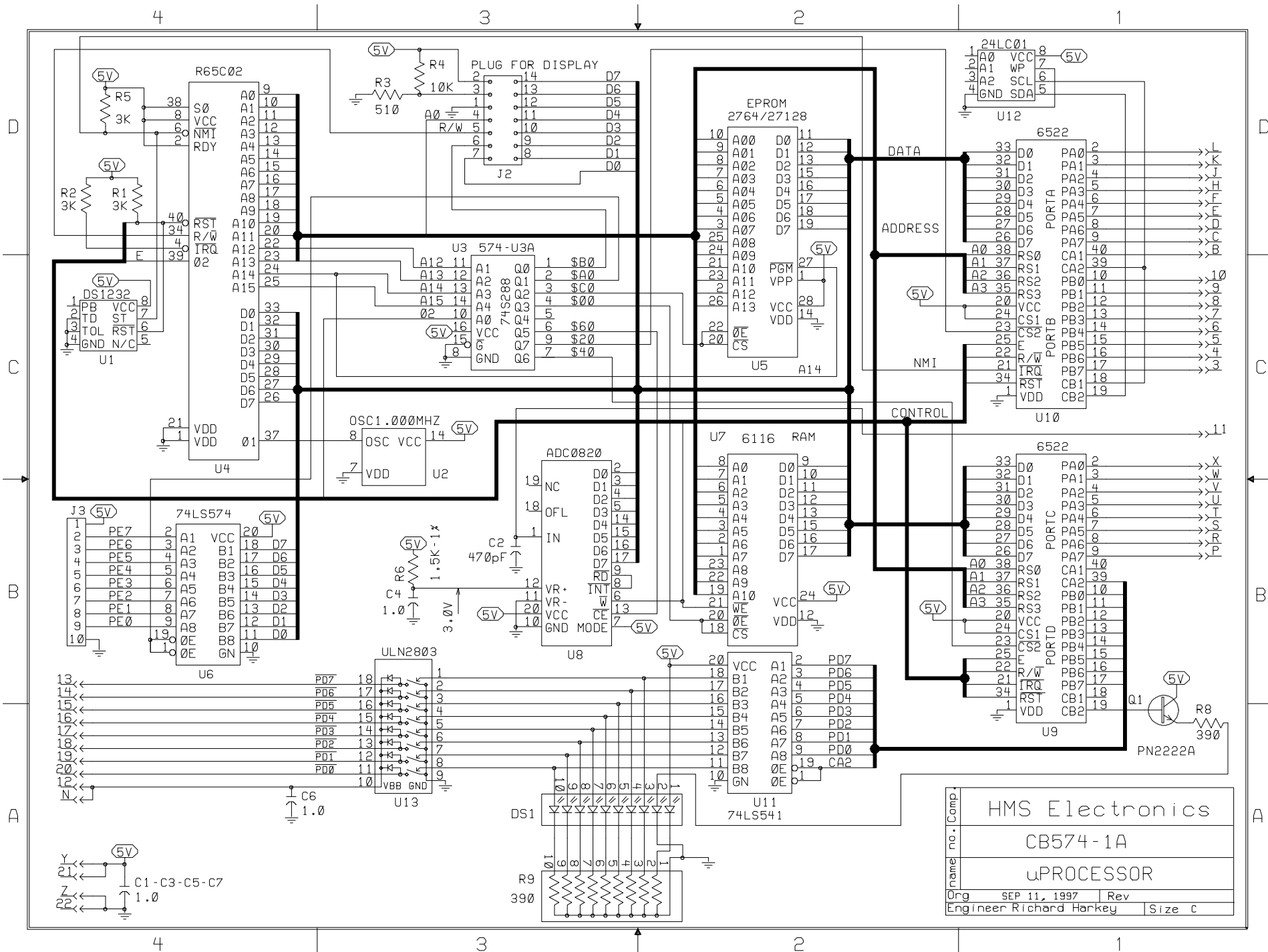


Comp.	HMS Electronics	
no.	CB513-5b	
name	Power Relay	
Org	1985	Rev NOV 19, 1993
Engineer	Richard Harkey	



INSTALL JUMPER PLUGS:
 1-2 AND 3-4 PULL UP INPUTS 0 VOLTS AT J1-16
 2-3 AND 4-5 PULL DOWN INPUTS + VOLTS AT J1-7

no. Comp	HMS Electronics	
	CB573LV-1B	
name	LOW VOLTAGE INTERFACE	
Org	JUN 4, 97	Rev OCT 14, 1997
Engineer	Richard Harkey	Size C

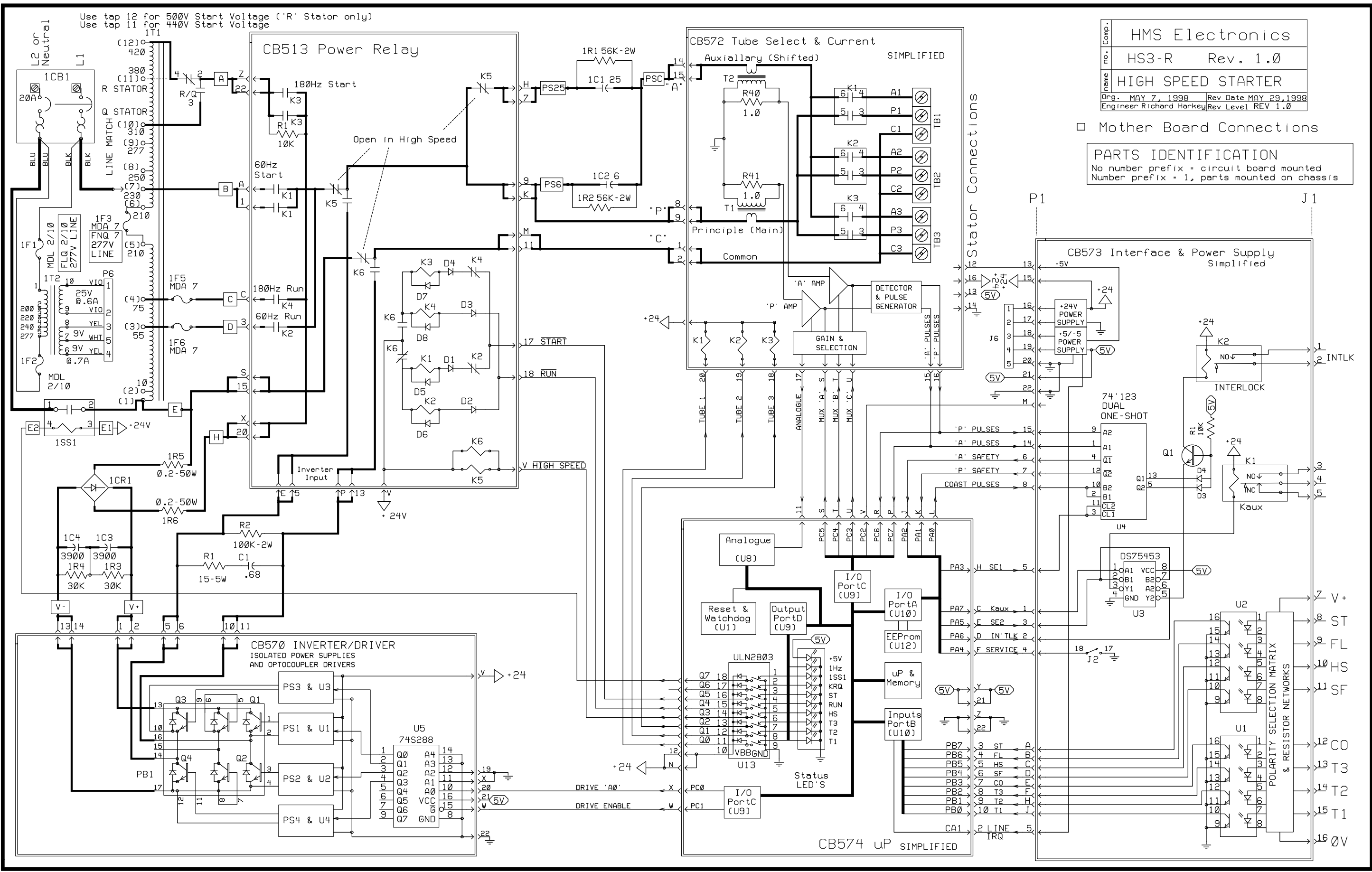


no.	Comp.	HMS Electronics	
no.		CB574-1A	
name		uPROCESSOR	
Org	SEP 11, 1997	Rev	
Engineer	Richard Harkey	Size	c

HMS Electronics
 HS3-R Rev. 1.0
 HIGH SPEED STARTER
 Org. MAY 7, 1998 Rev Date MAY 29, 1998
 Engineer Richard Harkey Rev Level REV 1.0

□ Mother Board Connections

PARTS IDENTIFICATION
 No number prefix = circuit board mounted
 Number prefix = 1, parts mounted on chassis



Use tap 12 for 500V Start Voltage ('R' Stator only)
 Use tap 11 for 440V Start Voltage

Stator Connections

CB574 uP SIMPLIFIED

CB573 Interface & Power Supply Simplified

CB572 Tube Select & Current SIMPLIFIED

CB513 Power Relay

CB570 INVERTER/DRIVER
ISOLATED POWER SUPPLIES
AND OPTOCOUPLER DRIVERS

